

# REM-4602

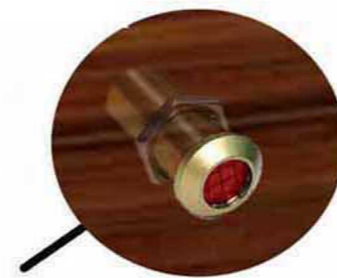
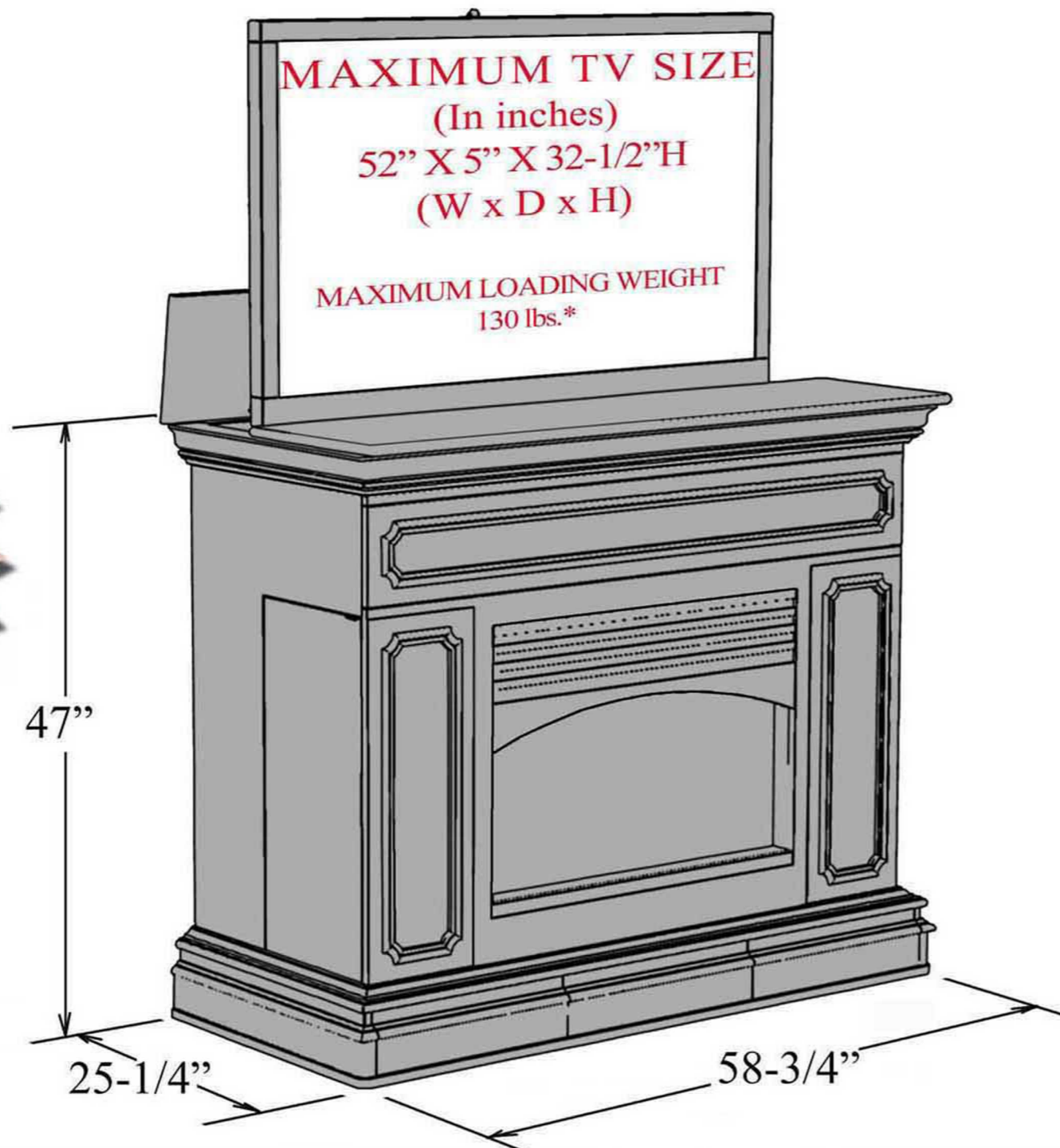
## FIREPLACE WITH PLASMA LIFT

### LIFT FEATURES:

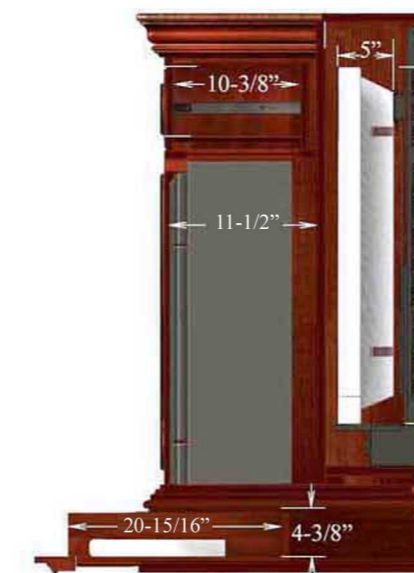
- \*Fully assembled.
- \*1 year in home parts and labor warranty.
- \*Radio Frequency Remote.
- \*Universal TV mounting bracket included.
- \*Auto reversing safety mechanism.
- \*Heavy duty rack and pinion drive system.
- \*Smooth and stable travel.
- \*Nearly silent operation.
- \*Welded steel construction.
- \*Thermal overload protection.
- \*Built in wire management.
- \*Patent Pending.

### CABINET FEATURES:

- \*Fully assembled.
- \*Built in Infrared Relay System.
- \*Top drawer interchangeable with wood, glass panel or speaker cloth.
- \*Secret door at sides for media storage.
- \*Secret drawers at base for electronics storage.
- \*Hand selected Birch solids and rare Cathedral African Mahogany veneers.
- \*Multi-step stain and scratch resistant-finish.
- \*Fully ventilated to allow for generous air circulation.



Infrared relay system provides a window from your handheld remotes to your TV and audio components even though they are concealed inside the cabinet. No programming required!



FRONT VIEW (open)



SIDE VIEW